



AMENDED PLAT

LOCATED IN SECTIONS 2 & 11, T 35 N, R 9 W AND IN SECTION 35, T 36 N, R 9 W, N.M.P.M. LA PLATA COUNTY, COLORADO

LINE	LENGTH	BEARING
L64	88.32'	N 88°43'00" E
L65	275.59'	S 65°00'00" E
L66	151.48'	S 35°00'00" E
L67	79.19'	S 50°00'00" W
L68	40.13'	S 70°00'00" W
L69	38.94'	S 40°00'00" W
L70	106.64'	S 80°00'00" W
L71	247.91'	S 65°00'00" E
L72	48.13'	N 86°00'00" E
L73	311.57'	S 43°00'00" W
L74	112.84'	S 18°00'00" W
L75	156.08'	S 02°00'00" W
L76	134.51'	S 20°00'00" W
L77	93.96'	S 40°00'00" E
L78	315.07'	S 05°00'00" W
L79	19.67'	S 43°00'00" W
L80	95.35'	S 17°00'00" E
L81	58.70'	N 40°00'00" W
L82	63.24'	N 03°00'00" E
L83	57.62'	N 85°00'00" W
L84	112.29'	S 08°00'00" W
L85	37.40'	S 15°00'00" E
L86	69.06'	S 25°00'00" W
L87	42.83'	S 13°00'00" E
L88	57.08'	S 60°00'00" E
L89	266.71'	S 43°00'00" E
L90	139.29'	S 48°00'00" E
L91	93.30'	S 14°00'00" E
L92	29.60'	N 50°00'00" W
L93	193.27'	S 40°00'00" W
L94	335.77'	S 00°46'45" W
L95	235.41'	N 89°34'01" E
L96	397.72'	N 70°13'01" E
L97	242.48'	N 90°00'00" E
L128	215.80'	S 08°51'24" E
L129	320.25'	S 28°03'00" E
L130	233.96'	S 37°08'04" W
L131	247.12'	S 13°54'02" W

LINE	DELTA	RADIUS	LENGTH	CHORD BEARING	CH LENGTH
C63	150°17'00"	50.00'	131.15'	S 16°08'30" E	96.66'
C64	26°17'00"	105.00'	48.17'	N 78°08'30" W	47.75'
C65	30°00'00"	95.00'	49.74'	N 50°00'00" W	49.18'
C66	85°00'00"	73.00'	108.30'	N 07°30'00" E	98.64'
C67	20°00'00"	80.00'	27.93'	N 60°00'00" E	27.78'
C68	30°00'00"	75.00'	39.27'	S 55°00'00" W	38.82'
C69	40°00'00"	100.00'	69.81'	N 60°00'00" E	68.40'
C70	145°00'00"	50.00'	126.54'	S 07°30'00" W	95.37'
C71	29°00'00"	60.00'	30.37'	S 79°30'00" E	30.05'
C72	137°00'00"	71.00'	169.77'	N 25°30'00" W	132.12'
C73	25°00'00"	120.00'	52.36'	S 30°30'00" W	51.95'
C74	16°00'00"	165.00'	46.08'	S 10°00'00" W	45.93'
C75	18°00'00"	130.00'	40.84'	N 11°00'00" E	40.67'
C76	60°00'00"	75.00'	78.54'	S 10°00'00" E	75.00'
C77	45°00'00"	80.00'	62.83'	N 17°30'00" W	61.23'
C78	38°00'00"	60.00'	39.79'	N 24°00'00" E	39.07'
C79	60°00'00"	225.00'	157.08'	S 13°00'00" W	60.00'
C80	157°00'00"	55.00'	150.71'	N 61°30'00" E	107.79'
C81	43°00'00"	60.00'	45.03'	S 18°30'00" E	43.98'
C82	88°00'00"	95.00'	145.91'	N 41°00'00" W	131.99'
C83	87°00'00"	90.00'	136.66'	S 51°30'00" W	123.90'
C84	23°00'00"	210.00'	84.30'	S 03°30'00" E	83.73'
C85	40°00'00"	225.00'	157.08'	N 05°00'00" E	153.91'
C86	40°00'00"	85.00'	89.34'	S 05°00'00" W	88.14'
C87	45°00'00"	90.00'	70.69'	S 37°30'00" E	68.88'
C88	17°00'00"	1030.00'	305.61'	N 51°30'00" W	304.49'
C89	91°00'00"	150.00'	238.24'	N 02°30'00" E	213.98'
C90	62°00'00"	60.00'	64.93'	S 17°00'00" W	61.80'
C91	144°00'00"	70.00'	175.93'	N 58°00'00" E	133.15'
C92	90°00'00"	125.00'	196.35'	S 85°00'00" W	176.78'
C113	62°09'20"	250.29'	271.52'	N 00°57'06" E	258.40'

DESCRIPTION OF MONUMENTS

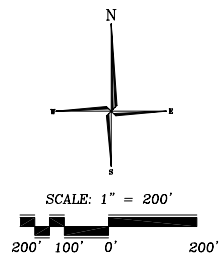
- SET 5/8" X 24" REBAR WITH A 1 1/2" ALUMINUM CAP STAMPED PLS 33640
- FOUND A 5/8" REBAR WITH A 1 1/2" ALUMINUM CAP STAMPED PLS 33640
- ◆ FOUND A 5/8" REBAR WITH A 1-1/2" ALUMINUM CAP STAMPED PLS 22574
- ◆ FOUND A 5/8" REBAR WITH A 2" ALUMINUM CAP STAMPED PLS 22574
- △ FOUND A 5/8" REBAR WITH A 1-1/2" ALUMINUM CAP STAMPED LS 25963 AND A 5/8" REBAR WITH A 1-1/2" ALUMINUM CAP STAMPED LS 8974
- FOUND A 5/8" REBAR WITH A 1-1/2" ALUMINUM CAP STAMPED LS 8974 D. SMITH
- FOUND 5/8" REBAR WITH A 2" ALUMINUM CAP STAMPED PLS 8974 D. SMITH
- ◆ FOUND A 5/8" REBAR WITH A 2" ALUMINUM CAP STAMPED LS 28265 L. CONNELLY
- FOUND A 5/8" REBAR WITH A 1-1/2" ALUMINUM CAP STAMPED LS 13340
- FOUND A STONE MONUMENT
- FOUND A 24" PINE TREE BLAZED AND SCRIBED AS NOTED IN THE G.L.O. NOTES
- FOUND A 5/8" REBAR NO L.S. I.D.
- ◇ FOUND A STANDARD B.L.M. MONUMENT A 2 1/2" PIPE WITH A 3-1/4" CAP
- FOUND A 1" DIA. GALVANIZED PIPE
- FOUND A 5/8" REBAR WITH L.S. 9187
- ◆ FOUND A STANDARD B.L.M. MONUMENT A 3-1/4" BRASS DISC SET IN ROCK
- ◆ FOUND A STANDARD FOREST SERVICE MONUMENT A 2-1/2" PIPE WITH A 3-1/4" BRASS CAP
- + POSITION FOR CORNER - MONUMENT NOT FOUND OR SET

STATE OF COLORADO } SS
LA PLATA COUNTY

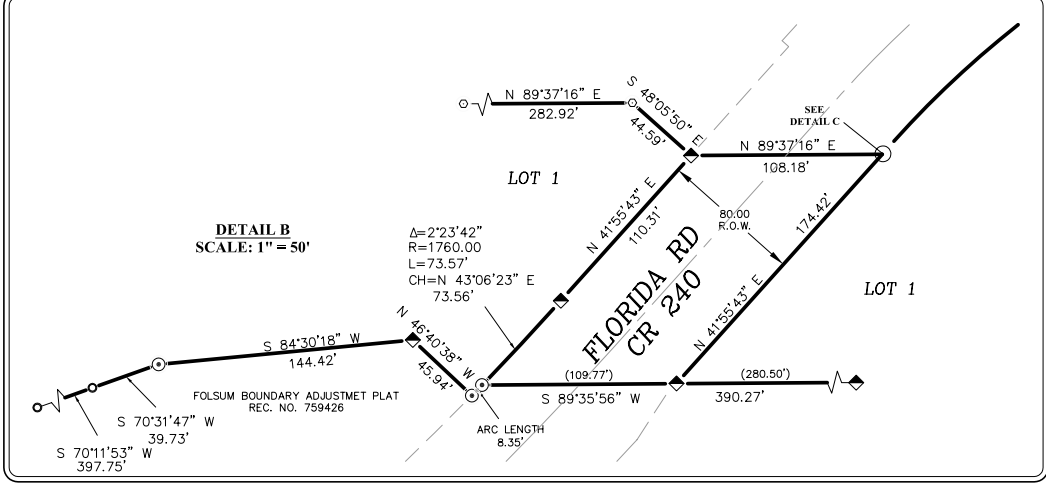
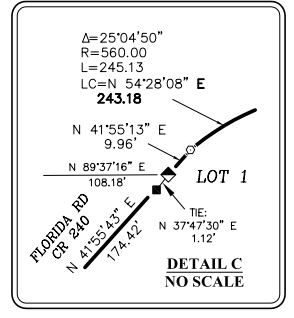
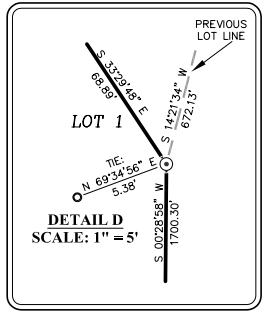
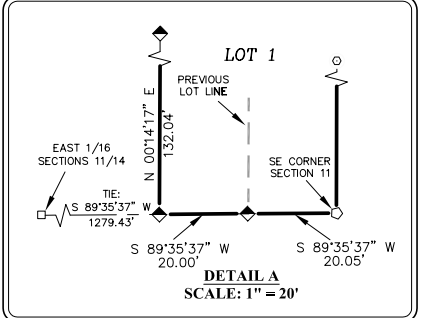
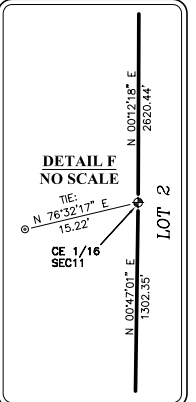
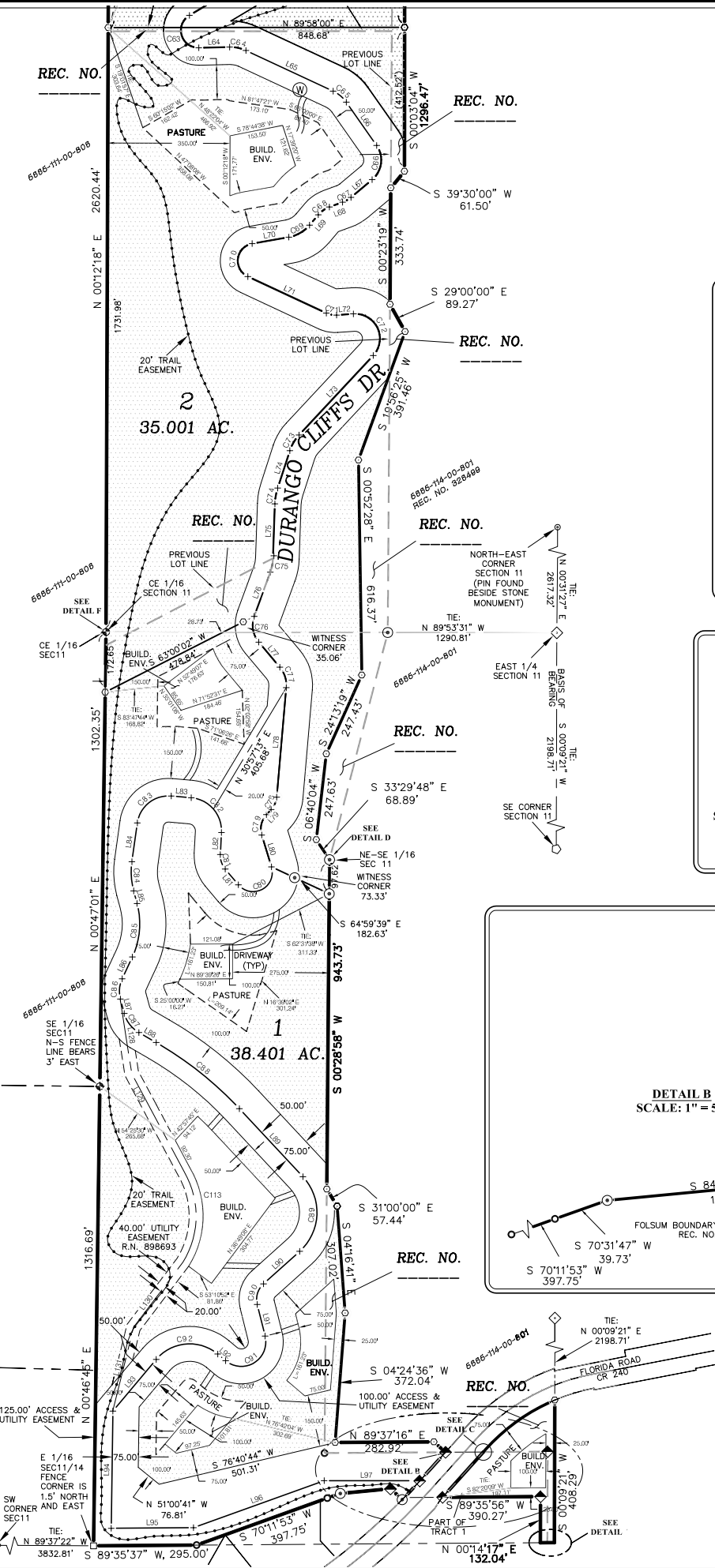
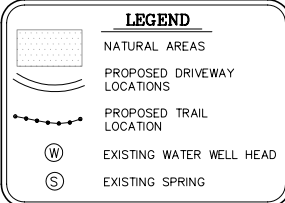
I hereby state that this instrument was filed for record at _____ O'clock _____ M and duly filed _____ Reception Number _____ Fee \$ _____
By LINDA DALEY, Recorder Deputy

NOTE:
Building Envelopes, Limited Use and Pasture angle points are marked with a five (5) foot tall metal "T" fence post.

NOTICE:
According to the laws of the State of Colorado, any legal action based upon any defect in this survey must commence within three years after such defect was first discovered. In no event may any action based upon any defect in this survey be commenced more than ten years from the date of the certification shown hereon.



BEARINGS ARE BASED ON THE EAST LINE OF THE SE 1/4 OF SECTION 11, T 35 N, R 9 W, N.M.P.M. THE ENDS OF SAID LINE HAVING BEEN MONUMENTED AS DESCRIBED HEREON AND TIED TO THE PROJECT BY SURVEY TRAVERS. (Reference Bearing = N 00° 09' 21" E)



GOFF OF DURANGO
AMENDED PLAT

TRACTS 1 & 2
SECTIONS 2 & 11, T 35 N, R 9 W, N.M.P.M. &
SECTION 35, T 36 N, R 9 W, N.M.P.M.

ENGINEERING + SURVEYING INC
128 ROCK POINT DRIVE
PO BOX 87
DURANGO, COLORADO 81302
970.247.1706

PREPARED BY: K. ALEXANDER CHECKED BY: P. NEWBY
SCALE: 1" = 200' DATE: FEBRUARY 20, 2006

SHEET 2 OF 4

Goff Engineering & Surveying, Inc. expressly reserves the common law copyright and other property rights in these plans. These plans are not to be changed or copied in any form or manner whatsoever nor are they to be assigned to any third party without first obtaining written permission and consent of Goff Engineering & Surveying, Inc. ©

G:\Kirkman\Amended Plat.dwg\AMENDED SURVEY PLAT.dwg, 2/20/2006 12:27:29 PM, kalexander